

History

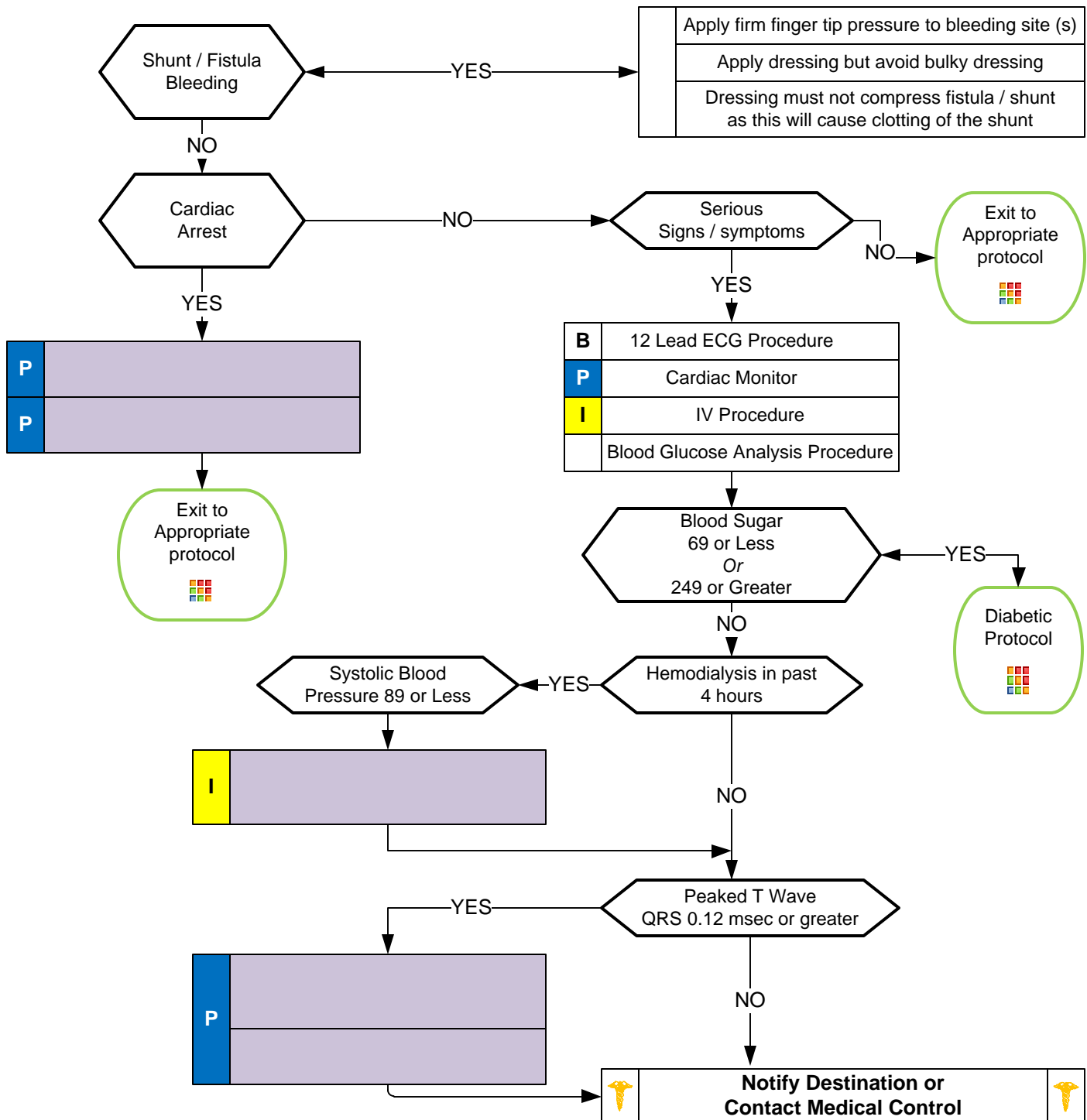
- Peritoneal or Hemodialysis
- Anemia
- Catheter access noted
- Shunt access noted
- Hyperkalemia

Signs and Symptoms

- Hypotension
- Bleeding
- Fever
- Electrolyte imbalance
- Nausea and / or vomiting
- Altered Mental Status
- Seizure
- Arrhythmia

Differential

- Congestive heart failure
- Pericarditis
- Diabetic emergency
- Sepsis
- Cardiac Tamponade





Dialysis / Renal Failure



Pearls

- **Recommended exam: Mental status. Neurological. Lungs. Heart.**
- Renal dialysis patients have numerous medical problems typically. Hypertension and cardiac disease are prevalent.
- Do not take Blood Pressure or start IV in extremity which has a shunt in place.
- Always consider Hyperkalemia in all dialysis or renal failure patients.