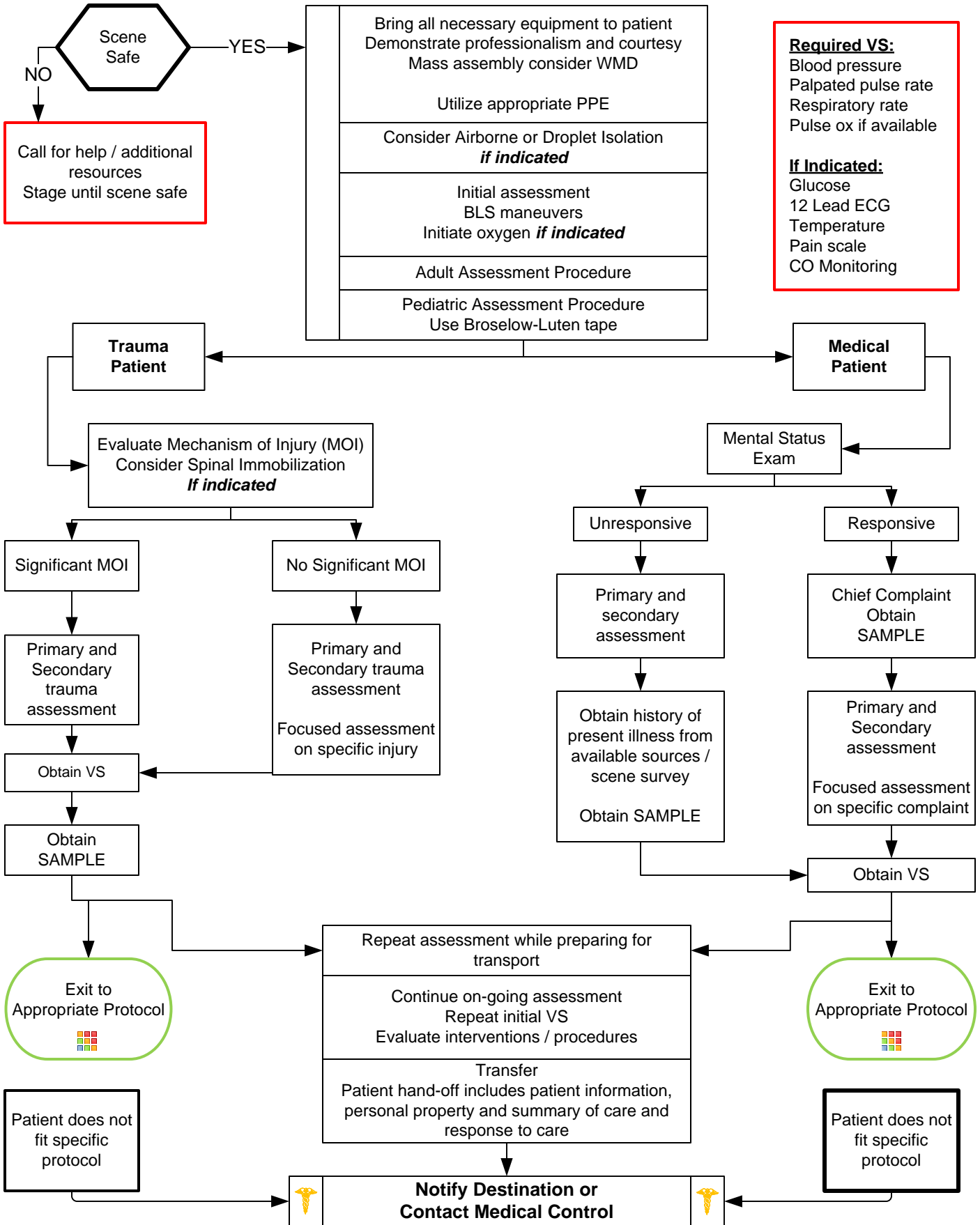




# Universal Patient Care



General Section Protocols



# Universal Patient Care



## Pearls

- **Recommended Exam: Minimal exam if not noted on the specific protocol is vital signs, mental status with GCS, and location of injury or complaint.**
- **Any patient contact which does not result in an EMS transport must have a completed disposition form.**
- **A pediatric patient is defined by fitting on the Broselow-Luten tape, Age  $\leq 15$ , weight  $\leq 49$  kg.**
- **Pediatric Airway Protocols are defined by patients  $\leq 11$  years of age.**
- Timing of transport should be based on patient's clinical condition and the transport policy.
- Never hesitate to contact medical control for patient who refuses transport.
- Blood Pressure is defined as a Systolic / Diastolic reading. A palpated Systolic reading may be necessary at times.
- SAMPLE: Signs / Symptoms; Allergies; Medications; PMH; Last oral intake; Events leading to illness / injury