

**Standard Report  
North Carolina Trauma Registry  
2000**

**Funded through the North Carolina Office of Emergency Medical  
Services**

The Hospitals of the North Carolina Trauma Registry (NCTR) who contributed data to  
this report include:

Cape Fear Valley Medical Center  
Carolinas Medical Center  
Cleveland Regional Medical Center  
Duke University Medical Center  
Forsyth Medical Center  
Mission St. Joseph's  
Moses H. Cone Memorial Hospital  
New Hanover Regional Medical Center  
NorthEast Medical Center  
Rowan Regional Medical Center  
University Health Systems of Eastern Carolina  
University of North Carolina Hospitals  
Wake Forest University Baptist Medical Center  
WakeMed Center

Sharon Kromhout-Schiro, Ph.D.  
Director of Research and Communications  
North Carolina Trauma Registry  
6330 Quadrangle Drive, Suite 190  
Chapel Hill, NC 27517  
Telephone: (919) 419-6474  
FAX: (919) 419-7175  
Email: sharon\_schiro@med.unc.edu

# Table of Contents

<b>TABLE OF CONTENTS .....</b>	<b>II</b>
<b>ANALYSIS OF THE 2000 NCTR DATA SET .....</b>	<b>1</b>
<b>ADMISSIONS PER MONTH.....</b>	<b>2</b>
ALL PATIENTS .....	2
PEDIATRIC PATIENTS.....	3
<b>DEMOGRAPHIC ANALYSIS OF THE PATIENTS IN THE NCTR DATASET .....</b>	<b>4</b>
AGE DISTRIBUTION.....	4
GENDER AND RACE DISTRIBUTION.....	5
<i>Gender and Race Distribution for 2000</i> .....	6
AVERAGE LENGTH OF STAY BY YEAR .....	7
AVERAGE ICU LENGTH OF STAY BY YEAR .....	8
<b>INJURY STATISTICS.....</b>	<b>9</b>
MECHANISM OF INJURY BY SURVIVAL.....	9
MECHANISM OF INJURY BY LOS.....	10
MECHANISM OF INJURY BY HOSPITAL CHARGES .....	11
<b>PRE-HOSPITAL STATISTICS.....</b>	<b>12</b>
PATIENT ORIGIN .....	12
MODE OF TRANSPORT.....	13
SCENE CONDITION.....	14
ARRIVAL CONDITION.....	15
CONDITION AT SCENE VS CONDITION ON ARRIVAL .....	16
<b>EMERGENCY DEPARTMENT STATISTICS.....</b>	<b>17</b>
CHIEF COMPLAINT.....	17
HOUR OF ADMISSION.....	18
ED DISPOSITION.....	19
DRUG SCREENING.....	20
ALCOHOL SCREENING.....	21
ADMISSION SERVICE.....	22
<b>INJURY SEVERITY AND OUTCOME STATISTICS.....</b>	<b>26</b>
INJURY SEVERITY SCORE (ISS): NUMBER OF PATIENTS, SURVIVAL RATE, LOS, AND HOSPITAL CHARGES	26
HOSPITAL DISPOSITION .....	27
<b>FINANCIAL STATISTICS: PAYOR MIX .....</b>	<b>28</b>
<b>HOSPITAL TRANSFERS (PATIENTS TRANSFERRED TO THE TRAUMA CENTER).....</b>	<b>29</b>
MECHANISM OF INJURY FOR TRANSFERRED PATIENTS .....	29
MECHANISM OF INJURY BY YEAR FOR TRANSFERRED PATIENTS WHO DIED.....	30

## Analysis of the 2000 NCTR Data set

The following report is a result of an analysis of the North Carolina Trauma Registry data for the years 1994 – 2000 available as of 01 Sep 2001. The data for this report were generated using the SAS System for Statistical Analysis, PC version 8.1. The patients represented in each table or figure are those with valid data for all fields referenced in that table or figure. Therefore, the numbers of patients represented may vary.

The number of patient records in the data set was 113,292, of which 11,754 had ED admission dates in 1994, 14,496 in 1995, 16,566 in 1996, 16,071 in 1997, 16,557 in 1998, 18,447 in 1999, and 19,401 in 2000. These data were submitted by 14 hospitals.

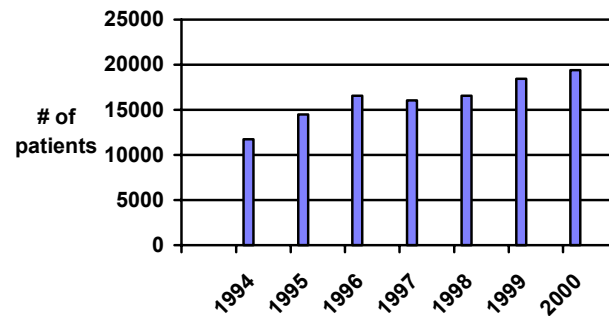


Figure 1: Number of Records by Year

# Admissions per month

## All patients

The number of patients seen in the Trauma Registry participating hospitals varies by month with little consistency to the pattern of variation over the seven year period covered in this report.

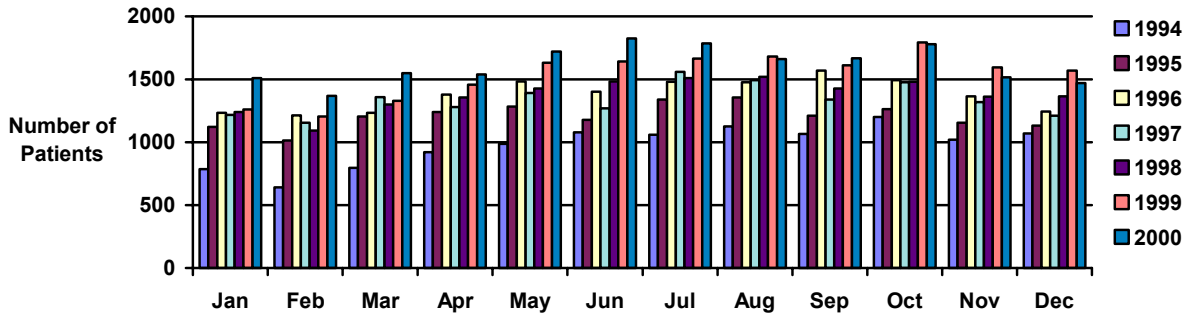


Figure 2: Admissions per Month, Grouped by Month

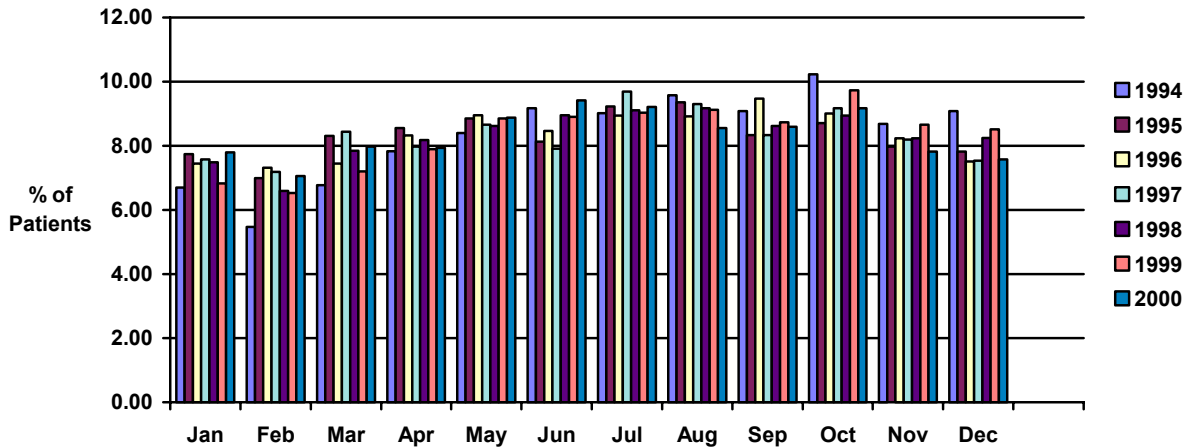


Figure 3: Percent Admissions per Month, Grouped by Month

## Pediatric patients

Pediatric patients are defined for the graph below as those patients under the age of 18 years.

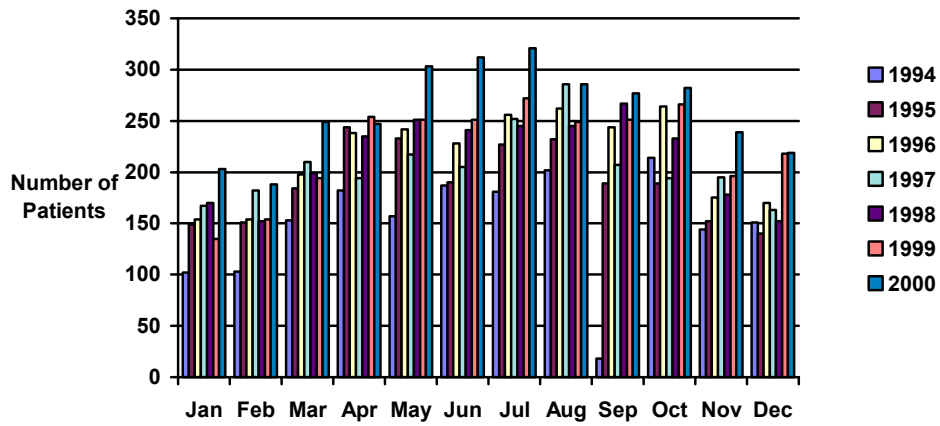


Figure 4: Number of Pediatric Admissions per Month, 1994-2000

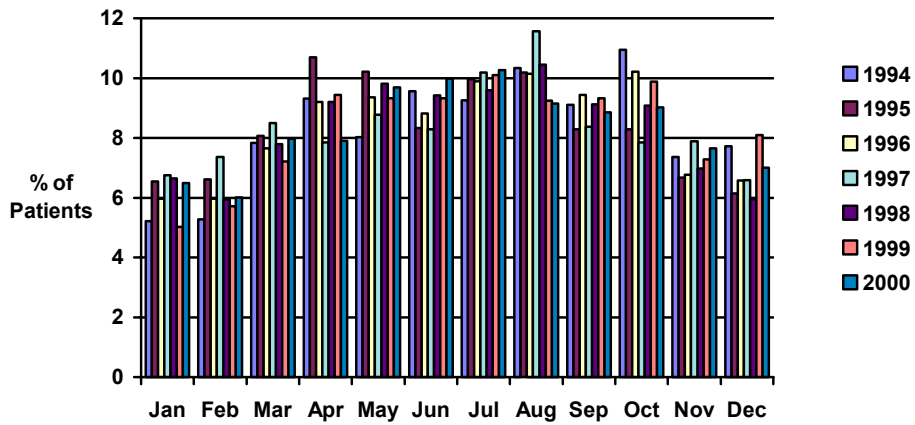


Figure 5: Percent of Pediatric Admissions per Month, 1994-2000

# Demographic Analysis of the Patients in the NCTR Dataset

## Age Distribution

The age distribution of trauma patients in the NCTR is shown in the figure below. Age data were missing on 120 patients. Patients with ages of greater than 119 (n=5) were excluded as probable error records.

Figure 6 demonstrates peaks in the distribution of the age of trauma patients at infancy, early twenties, mid thirties, and at age 80. This pattern is a change from the trimodal distribution seen in previous NCTR reports.

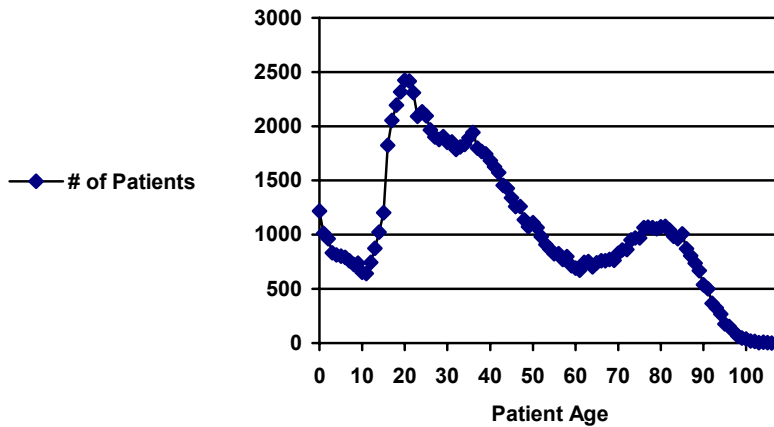


Figure 6: Age Distribution, 1994 - 2000

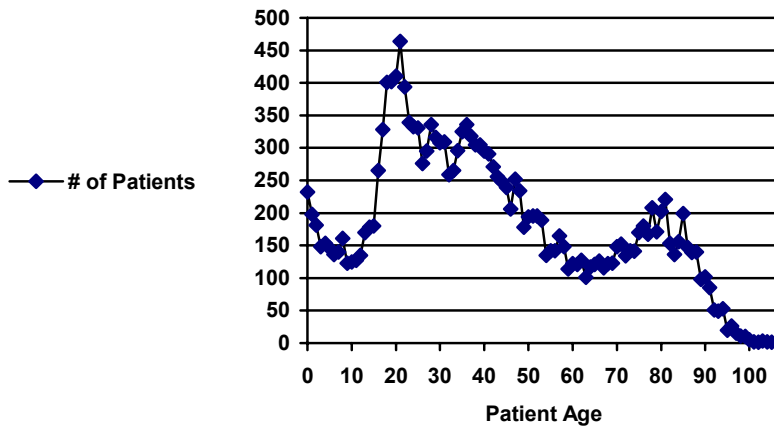


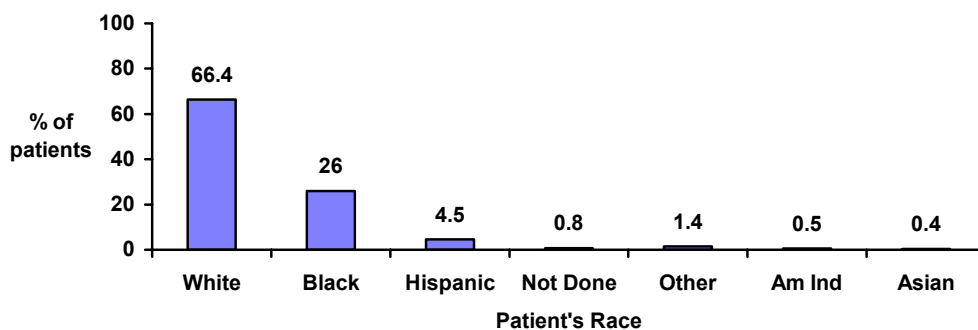
Figure 7: Age Distribution, 2000

## Gender and Race Distribution

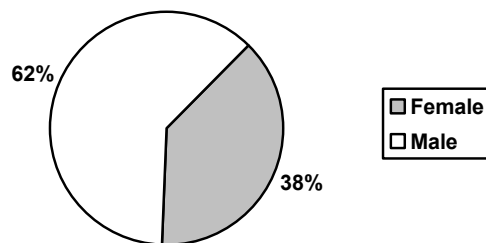
The gender and race distributions of trauma patients in the NCTR are shown in the tables and figures below.

	Female	Male	Not Done/Doc	Totals	%
American Indian (I)	182	0	414	596	0.5
Asian (A)	186	324	0	510	0.4
Black (B)	8891	20538	3	29432	26.0
Hispanic (H)	838	4221	0	5059	4.5
White (W)	32336	42915	2	75253	66.4
Other (O)	465	1081	1	1547	1.4
Not Done/Doc (D)	316	535	44	894	0.8
Total	43214	70028	50	113,292	

**Table 1: Gender and Racial Distribution, 1994 - 2000**



**Figure 8: Racial Distribution, 1994 - 2000**

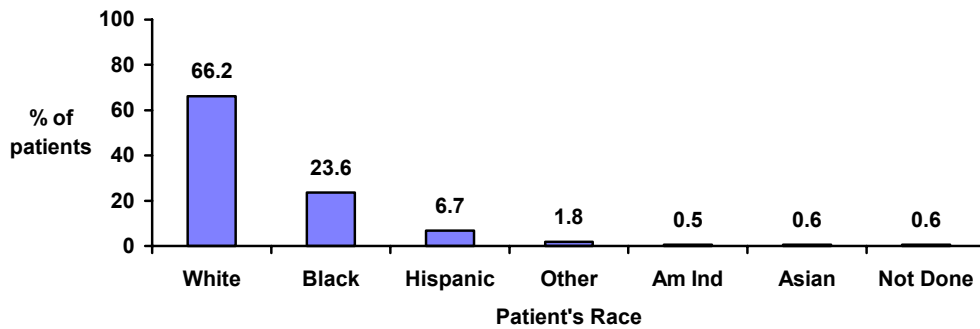


**Figure 9: Gender Distribution, 1994 - 2000**

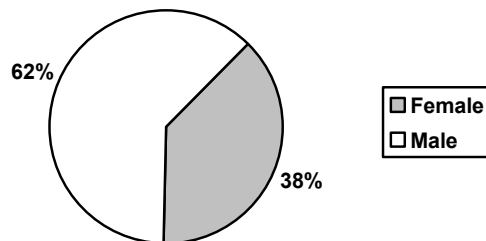
## Gender and Race Distribution for 2000

	Female	Male	Not Done/Doc	Totals	%
American Indian (I)	24	70	0	94	0.5
Asian (A)	37	71	0	108	0.6
Black (B)	1405	3183	0	4588	23.6
Hispanic (H)	247	1058	0	1305	6.7
White (W)	5470	7362	1	12833	66.2
Other (O)	115	242	0	357	1.8
Not Done/Doc (D)	30	78	8	116	0.6
<b>Total</b>	<b>7328</b>	<b>12064</b>	<b>9</b>	<b>19401</b>	

**Table 2: Gender and Racial Distribution, 2000**



**Figure 10: Racial Distribution, 2000**



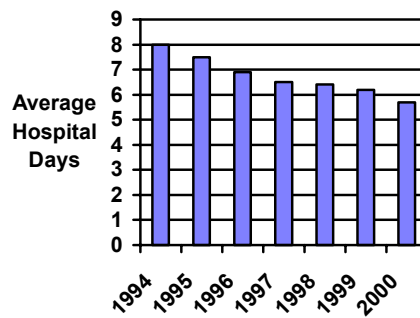
**Figure 11: Gender Distribution, 2000**

### **Average Length of Stay by Year**

The average length of stay for each year is shown in Table 3. The average length of stay has decreased over the past seven years.

Year	Mean +/- standard deviation (days)	# of patients with hospsdays > 0
1994	8.0 +/- 13.0	11425
1995	7.5 +/- 11.5	14109
1996	6.9 +/- 12.5	16209
1997	6.5 +/- 11.4	15710
1998	6.4 +/- 10.1	16141
1999	6.2 +/- 10.5	18100
2000	5.7 +/- 9.0	19135

**Table 3: Average LOS by Year**



**Figure 12: Average LOS by Year, 1994 - 2000**

### Average ICU Length of Stay by Year

The average ICU length of stay for each year is shown in Table 4. The average length of stay decreased over the period of 1994 - 1998, then increased in 1999.

Year	Mean +/- standard deviation (days)	# of patients with valid icudays data
1994	6.6 +/- 11.6	3391
1995	6.4 +/- 10.3	3864
1996	6.2 +/- 11.0	4257
1997	5.9 +/- 10.8	3913
1998	5.8 +/- 9.5	4246
1999	6.5 +/- 10.1	4254
2000	6.1 +/- 9.1	4445

Table 4: Average ICU LOS by Year, 1994 - 2000

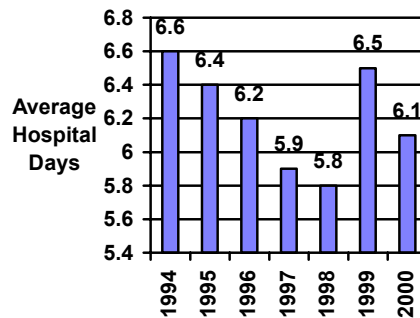


Figure 13: Average ICU LOS by Year, 1994 -2000

## Injury Statistics

The distribution of injury mechanisms was analyzed for the seven year period (Table 5) and for the year 2000 (Table 6). As these tables demonstrate, the majority of patients in the NCTR have sustained a blunt injury. Over the seven-year period, the survival rate was higher for the blunt injuries than for burn or penetrating injuries. Blunt injuries have increased in percentage over the seven year period, while penetrating injuries have decreased.

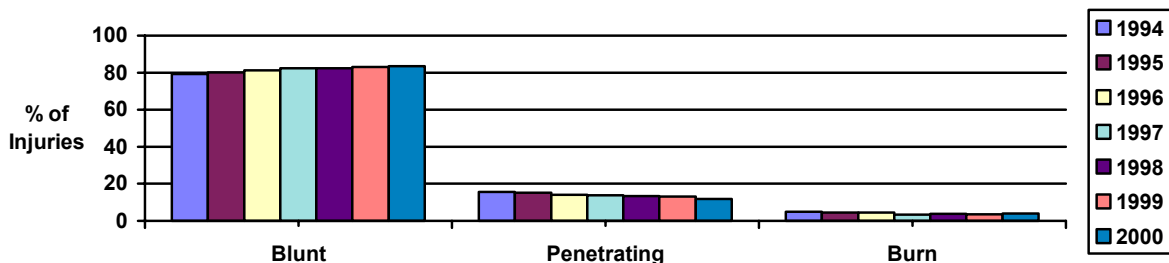
### *Mechanism of Injury by Survival*

Injury Type	# of Patients	%	Survival (%)
Blunt	92038	81.94	95.0 +/- 21.8
Burn	4486	3.99	93.5 +/- 24.6
Penetrating	15410	13.72	90.7 +/- 29.0
Other	36	0.03	77.8 +/- 42.2
Not Done/Doc	352	0.31	91.8 +/- 27.5
Pending	8	0.01	100.0 +/- 00.0

**Table 5: Injury Mechanism by Survival Rate, 1994 - 2000**

Injury Type	# of Patients	%	Survival (%)
Blunt	16172	83.54	95.6 +/- 20.6
Burn	789	4.08	93.4 +/- 24.8
Penetrating	2303	11.90	92.0 +/- 27.1
Other	6	0.03	66.7 +/- 51.6
Not Done/Doc	87	0.45	90.8 +/- 29.1
Pending	1	0.01	100 +/- 0

**Table 6: Injury Mechanism by Survival Rate, 2000**



**Figure 14: Mechanism of Injury by Year**

## Mechanism of Injury by LOS

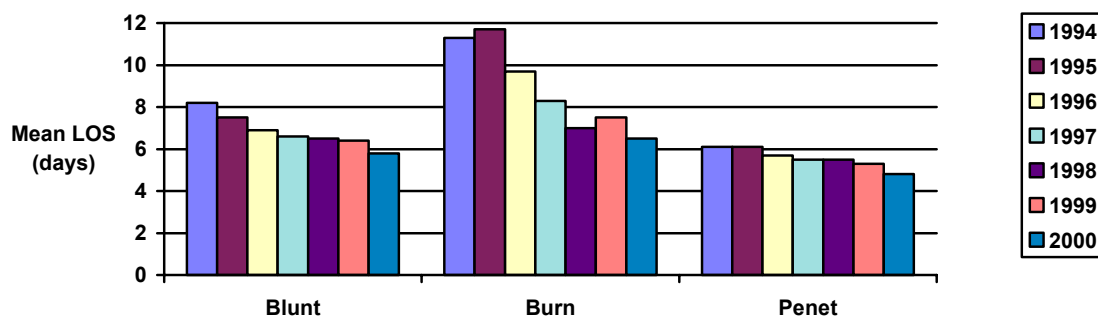
Injury Type	# of Patients	Mean LOS	Standard Dev
Blunt	91179	6.7	10.8
Burn	4474	8.8	16.0
Penetrating	14776	5.5	10.8
Other	37	3.1	4.5
Not Done/Doc	355	5.2	12.9
Pending	8	2.9	2.2

**Table 7: Injury Mechanism by LOS, 1994 - 2000**

Injury Type	# of Patients	Mean LOS	Standard Dev
Blunt	16033	5.8	8.9
Burn	780	6.5	11.5
Penetrating	2228	4.8	8.0
Other	6	1.8	1.0
Not Done/Doc	87	5.1	13.6
Pending	1	1.0	n/a

**Table 8: Injury Mechanism by LOS, 2000**

The trend for LOS for blunt, burn, and penetrating injuries is a decreasing length of stay over the past seven years. The greatest percentage drop was for burn patients. The categories of Other, Pending, and Not Done/Doc for the Mechanism of Injury are not included in the graph below. Records with a hospital LOS of 0 days or less were not included.



**Figure 15: Mean LOS by Injury Mechanism by Year**

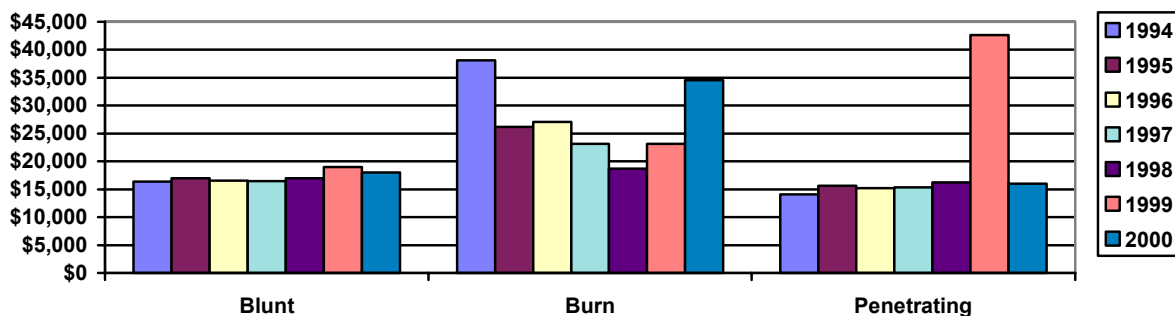
### Mechanism of Injury by Hospital Charges

Injury Type	# of Patients	Mean Hospital Charges	Standard Dev
Blunt	85,968	\$17,250	\$56,609
Burn	4,001	27,377	185,070
Penetrating	14,003	19,370	463,236
Other	38	6,602	11,869
Not Done/Doc	292	11,682	18,722
Pending	7	10,526	7,018

**Table 9: Injury Mechanism by Hospital Charges, 1994 - 2000**

Injury Type	# of Patients	Mean Hospital Charges	Standard Dev
Blunt	13,584	\$17,989	\$37,954
Burn	569	34,570	320,576
Penetrating	1,818	15,984	33,690
Other	3	8,227	7,380
Not Done/Doc	84	9,248	13,156
Pending	1	6,782	n/a

**Table 10: Injury Mechanism by Hospital Charges, 2000**



**Figure 16: Injury Mechanism by Average Hospital Charges by Year**

# Pre-Hospital Statistics

## Patient Origin

Patient Origin (Arriv_from)	1994	1995	1996	1997	1998	1999	2000	Total
Clinic	94	156	173	145	165	166	184	1083
EMS Station	4	9	7	6	6	9	12	53
Home	783	890	1132	987	1523	1414	1736	8465
Jail	10	12	18	24	41	41	31	177
MD Office	219	156	149	112	128	135	154	1053
Not Done/Doc	349	559	624	382	307	159	298	2678
Nursing Home	135	169	200	222	312	300	307	1645
Pending	0	1	3	0	0	0	0	4
Refer Hosp	3734	4338	4840	4633	4726	5162	5435	32868
Rehab	0	0	0	0	1	1	0	2
Scene	6426	8206	9420	9560	9348	11060	11244	65264

Table 11: Patient Origin by Year

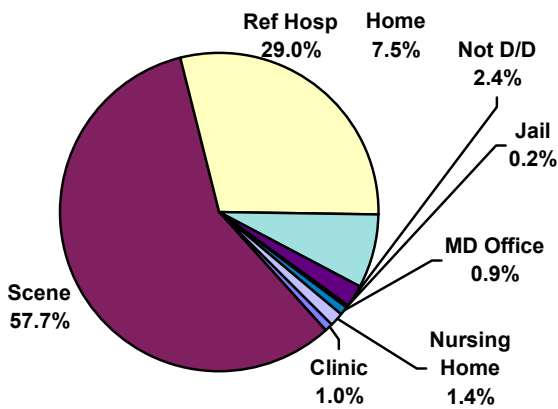


Figure 17: Patient Origin, 1994 – 2000

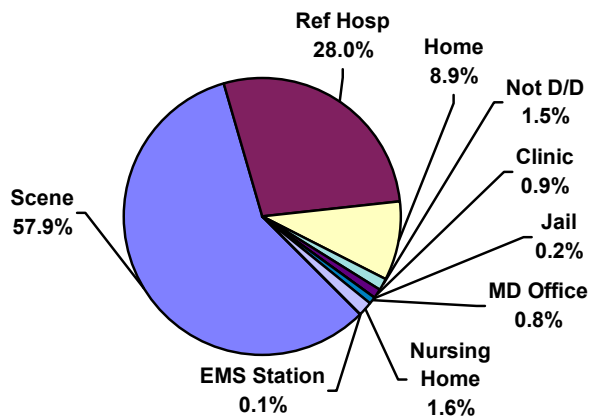


Figure 18: Patient Origin, 2000

## Mode of Transport

ALS, private vehicle, helicopter, and ambulance continue to be the dominant methods of transport to the hospitals.

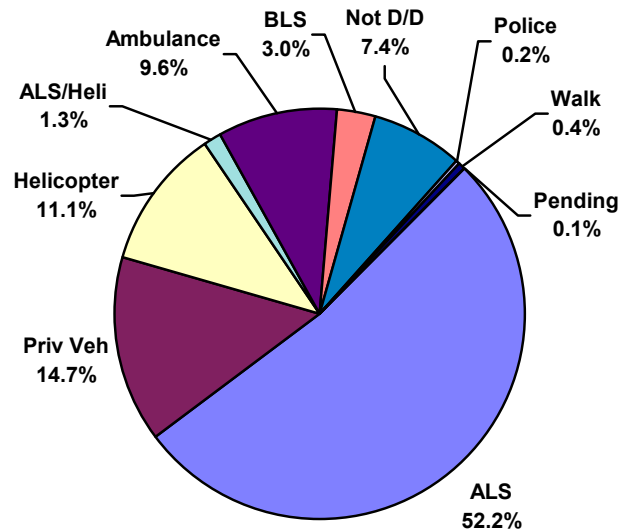


Figure 19: Mode of Transport, 1994 – 2000

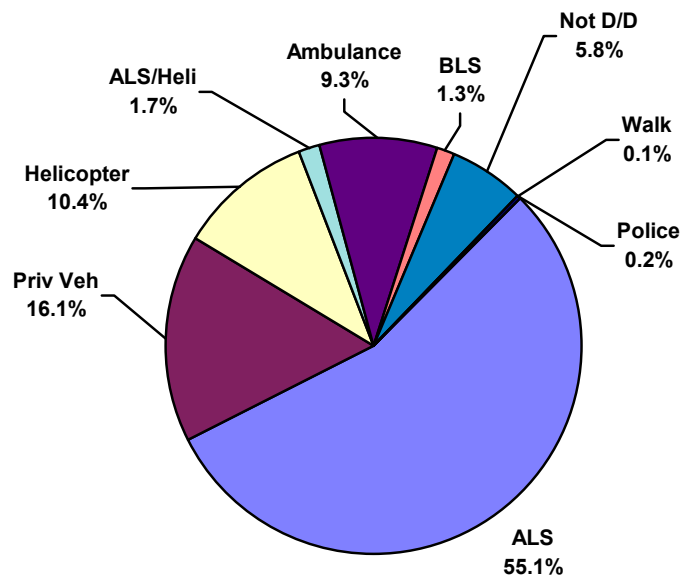


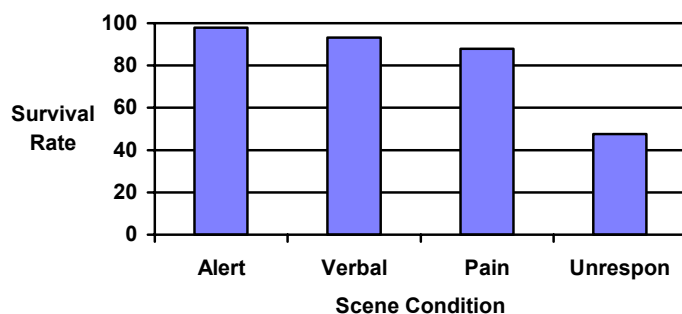
Figure 20: Mode of Transport, 2000

## Scene Condition

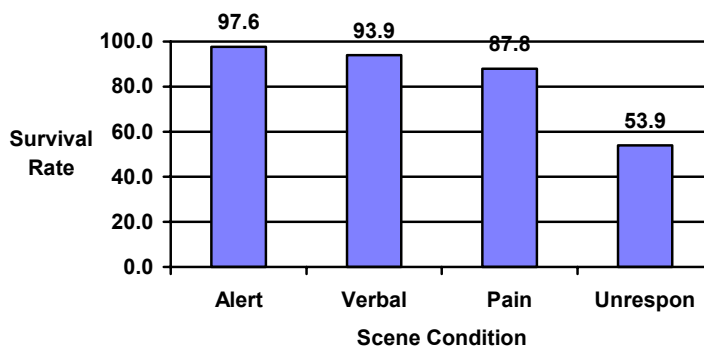
Further analysis of the ability of simple tools to identify patients at high risk of death was performed in the database using the “AVPU” (Alert, Verbal, responsive to Pain, Unresponsive) assessment of patient’s status at the scene. The number in parentheses in the survival column is the number of cases with valid ED or hospital disposition values (which were used to determine survival). The survival rate decreases with the worsening of the patient’s status at the scene, lending support to the hypothesis that the “AVPU” assessment of patients’ status at the scene is predictive of patient survival. Note that approximately 60% of the records are missing the data for the scene condition field.

Condition at Scene	Number	Percent	Survival
Alert	36505	32.22	97.8 +/- 14.5 (n=36148)
Verbal Stimuli	3073	2.71	93.1 +/- 25.3 (n=3027)
Responsive to Pain	1736	1.53	87.9 +/- 32.6 (n=1692)
Unresponsive	4119	3.6	47.5 +/- 49.9 (n=4036)

**Table 12: Scene Condition by Survival, 1994 - 2000**



**Figure 21: Scene Condition by Survival Rate, 1994 – 2000**



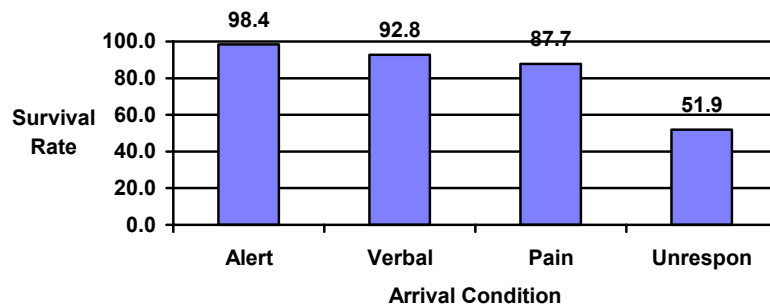
**Figure 22: Scene Condition by Survival Rate, 2000**

### Arrival Condition

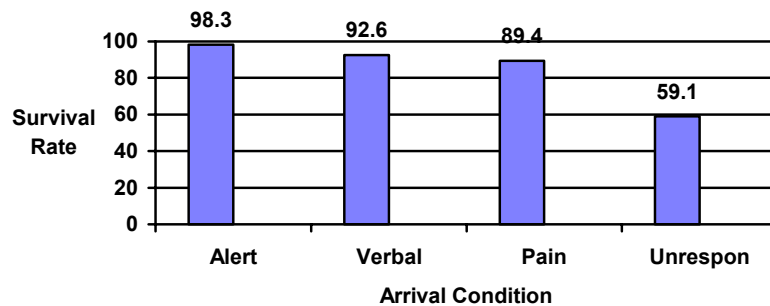
As for the scene condition, the trend in survival rate follows the “AVPU” assessment of the patient’s condition upon arrival at the Trauma Center. Note, also, that the percentage of records with missing data is smaller for the arrival condition field than for the scene condition field.

Condition on Arrival	Number	Percent	Survival
Alert	88795	78.4	98.4 +/- 12.5 (n=88123)
Verbal Stimuli	3643	3.2	92.8 +/- 25.8 (n=3592)
Responsive to Pain	2325	2.0	87.7 +/- 32.8 (n=2265)
Unresponsive	8228	7.3	51.9 +/- 50.0 (n=8136)
Pending	0	0	n/a
Not Done/Doc	10301	9.1	95.3 +/- 21.2 (n=10214)

**Table 13: Arrival Condition by Survival Rate**



**Figure 23: Survival Rate by Arrival Condition, 1994 - 2000**



**Figure 24: Arrival Condition by Survival Rate, 2000**

### **Condition at Scene vs Condition on Arrival**

The condition of the patient at the scene was compared to the condition of the patient on arrival at the Trauma Center, based on the “AVPU” assessment of condition. Of the 44,247 patients with complete scene condition and arrival condition data, the condition of 3,186 patients improved, 2,084 worsened, and 38,977 remained the same.

Condition at Scene	Condition on Arrival				
	Alert	Verbal Stimuli	Responsive to Pain	Unresponsive	Not Done/Doc
Alert	34407	671	184	367	876
Verbal Stimuli	1666	885	167	259	96
Responsive to Pain	424	240	580	436	56
Unresponsive	362	155	338	3105	159
Pending	4	1	1	9	5
Not Done/Doc	51932	1691	1055	4052	9109

**Table 14: Scene Condition vs Arrival Condition**

# Emergency Department Statistics

## Chief Complaint

Chief complaints with an occurrence rate of < 0.1% were excluded from this graph.

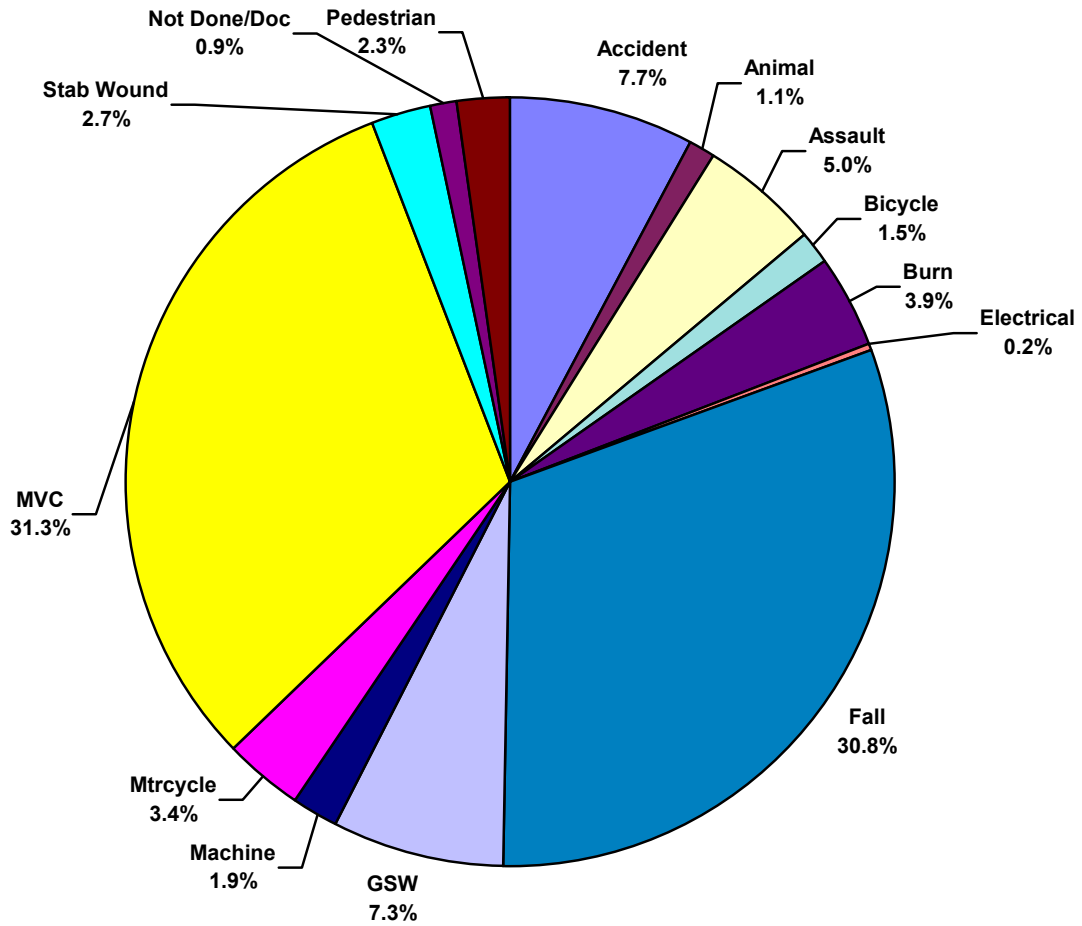


Figure 25: Chief Complaint Rate, 1994 - 2000

## Hour of Admission

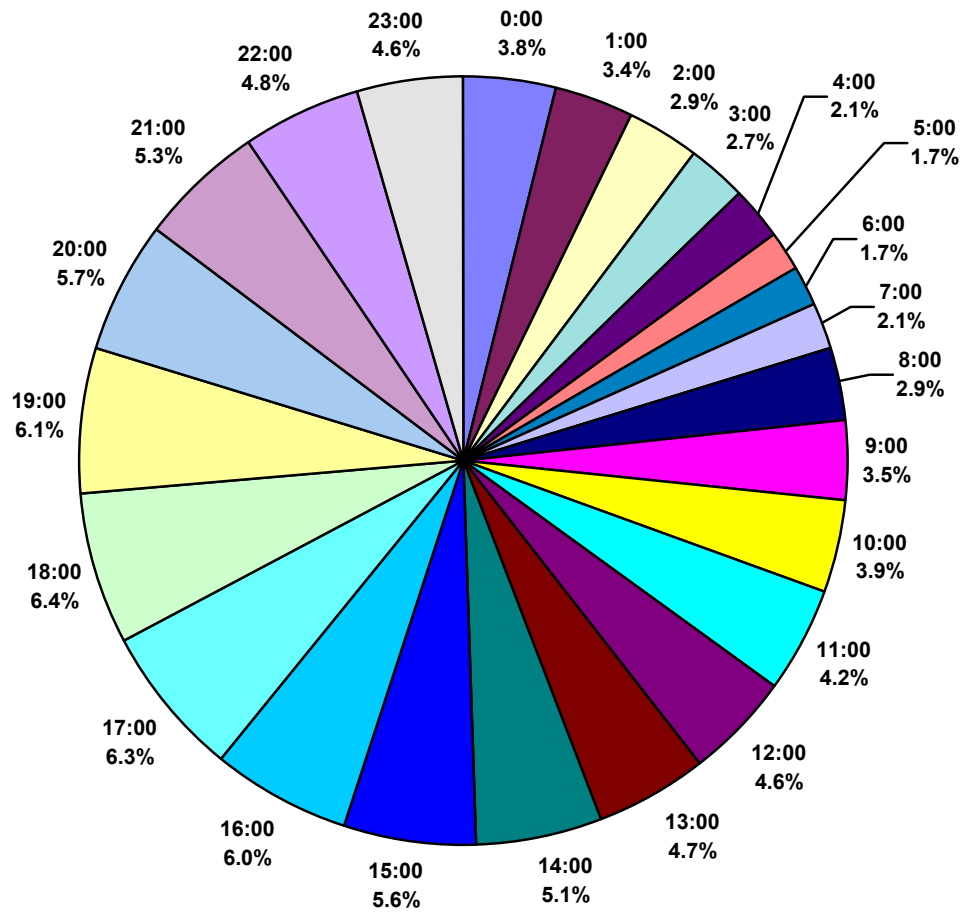


Figure 26: Hour of Admission, 1994 - 2000

## ED Disposition

The majority of trauma patients were sent to the floor from the Trauma Center.

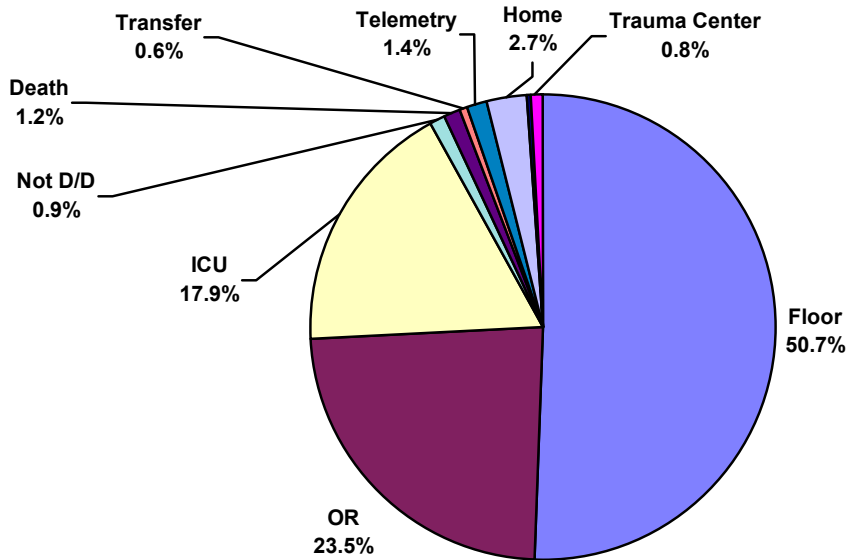


Figure 27: ED Disposition, 1994 – 2000

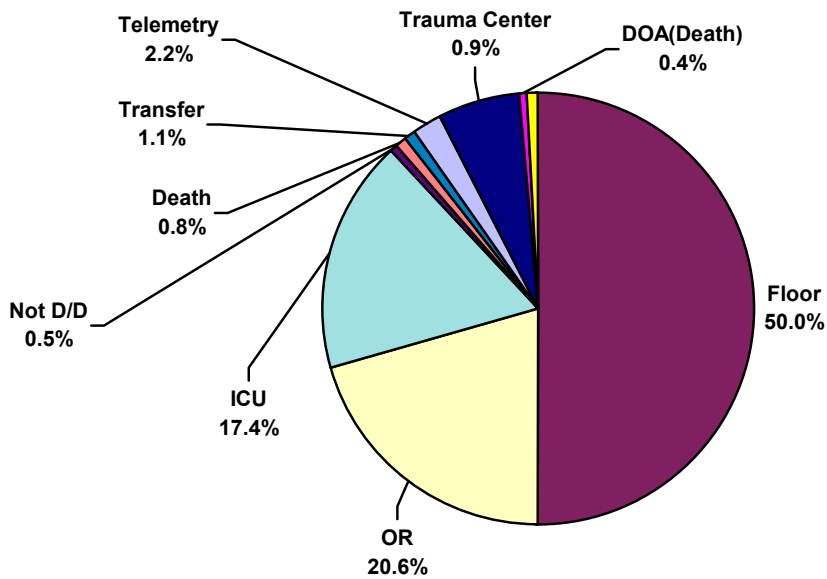


Figure 28: ED Disposition, 2000

## Drug Screening

In this section, the use of drugs is analyzed in relation to survival, length of stay, and hospital charges. There does not appear to be a relationship between positive drug screen and survival rate, LOS, and hospital charges. This analysis may be impacted by the use of pain medication in the treatment of trauma patients at the scene or in the ED prior to obtaining a blood sample for drug analysis. A drug screen value of 700 indicates a positive drug history, but no blood level drawn

Drug	Number	Percent	% Survival	Average LOS	Average Hospital Charges
<b>700</b>	233	0.2	97.0 +/- 17.1 (n=233)	5.9 +/- 11.1 (n=231)	\$15,732 +/- \$39,443 (n=226)
<b>Cocaine</b>	2099	1.8	95.5 +/- 20.64 (n=2088)	7.7 +/- 14.80 (n=2076)	20,425 +/- 33,400 (n=1921)
<b>Marijuana</b>	2138	1.9	93.8 +/- 24.2 (n=2122)	8.1 +/- 16.4 (n=2111)	25,531 +/- 42,033 (n=1962)
<b>Poly Drugs</b>	2709	2.4	95.8 +/- 20.1 (n=2607)	8.8 +/- 13.7 (n=2614)	31,763 +/- 194,593 (n=2219)
<b>None</b>	21709	19.2	93.4 +/- 24.8 (n=21316)	7.9 +/- 13.5 (n=21082)	21,226 +/- 37,148 (n=20250)
<b>Other</b>	1947	1.7	93.5 +/- 24.7 (n=1925)	9.8 +/- 13.7 (n=1923)	32,828 +/- 56,500 (n=1599)
<b>Not Performed</b>	726	.6	97.1 +/- 16.8 (n=724)	3.9 +/- 6.2 (n=716)	6695 +/- 11,713 (n=697)
<b>Not Done/ Doc</b>	81731	72.1	94.5 +/- 22.7 (n=81248)	6.1 +/- 9.8 (n=80008)	16,118 +/- 209,002 (n=75386)

**Table 15: Drug Screen Results by Survival Rate, Average LOS, and Average Hospital Charges, 1994 – 2000**

Drug	Number	Percent	% Survival	Average LOS	Average Hospital Charges
<b>700</b>	29	0.2	96.6 +/- 18.6 (n=29)	9.2 +/- 16.6 (n=29)	\$35,795 +/- \$84,767 (n=28)
<b>Cocaine</b>	255	1.3	96.1 +/- 19.4 (n=255)	6.8 +/- 10.8 (n=255)	24,038 +/- 43,314 (n=183)
<b>Marijuana</b>	288	1.5	93.8 +/- 24.2 (n=288)	6.0 +/- 9.5 (n=287)	24,978 +/- 48,856 (n=224)
<b>Poly Drugs</b>	547	2.8	97.2 +/- 16.5 (n=500)	7.4 +/- 9.4 (n=503)	25,866 +/- 36,330 (n=311)
<b>None</b>	3345	17.2	94.9 +/- 22.0 (n=3338)	5.9 +/- 9.3 (n=3315)	18,091 +/- 34,178 (n=2773)
<b>Other</b>	413	2.1	92.9 +/- 25.7 (n=410)	9.1 +/- 12.6 (n=410)	35,319 +/- 54,900 (n=272)
<b>Not Performed</b>	690	3.6	97.5 +/- 15.5 (n=688)	3.7 +/- 5.9 (n=681)	6314 +/- 11,243 (n=661)
<b>Not Done/Doc</b>	13834	71.3	94.9 +/- 21.9 (n=13807)	5.5 +/- 8.7 (n=13612)	18,112 +/- 80,096 (n=11578)

**Table 16: Drug Screen Results by Survival Rate, Average LOS, and Average Hospital Charges, 2000**

## Alcohol Screening

In this section, the use of alcohol is analyzed in relation to survival, length of stay, and hospital charges. In contrast to the drug screen data, the positive ETOH screen result appears to positively correlate with survival rate, and inversely correlate with LOS and hospital charges. The ETOH level of 700 indicates that a positive alcohol history was recorded, but a blood level was not drawn.

ETOH Level	Number	Percent	% Survival	Average LOS	Average Hospital Charges
< 0.08	22685	20.02	92.1 +/- 26.9 (n=22494)	8.8 +/- 13.6 (n=22253)	\$27,349 +/- \$72,759 (n=21131)
0.08-1.0	737	0.65	94.2 +/- 23.3 (n=729)	8.1 +/- 12.8 (n=723)	\$23,692 +/- \$40,803 (n=668)
> 0.1	10168	8.98	93.7 +/- 24.3 (n=5967)	7.7 +/- 13.8 (n=9976)	\$23,104 +/- \$87,012 (n=9416)
700	1204	1.06	96.3 +/- 18.8 (n=1199)	5.5 +/- 9.4 (n=1192)	\$15,174 +/- \$29,131 (n=1183)
Unknown	78495	69.29	95.0 +/- 21.8 (n=77843)	5.9 +/- 9.7 (n=76682)	\$14,438 +/- \$211,920 (n=71909)

Table 17: ETOH Screen Results by Survival Rate, Average LOS, and Average Hospital Charge, 1994 – 2000

ETOH Level	Number	Percent	% Survival	Average LOS	Average Hospital Charges
< 0.08	3022	15.6	93.4 +/- 24.9 (n=3013)	7.7 +/- 10.7 (n=2998)	\$29,773 +/- \$45,521 (n=2319)
0.081 - 1.0	95	0.5	91.6 +/- 27.9 (n=95)	7.4 +/- 9.7 (n=95)	\$28,774 +/- \$50,993 (n=66)
> 0.1	1450	7.5	95.5 +/- 20.7 (n=1446)	6.6 +/- 11.4 (n=1431)	\$30,917 +/- \$230,999 (n=1109)
700	294	1.5	95.9 +/- 19.8 (n=294)	7.0 +/- 11.5 (n=290)	\$22,526 +/- \$42,288 (n=284)
Unknown	14539	74.9	95.3 +/- 21.1 (n=14509)	5.1 +/- 8.1 (n=14309)	\$14,842 +/- \$34,883 (n=12281)

Table 18: ETOH Screen Results by Survival Rate, Average LOS, and Average Hospital Charge, 2000

## Admission Service

Admission Service	Number	Percent	Average LOS
Burn	3186	2.81	11.1 +/- 18.8 (n=3155)
Cardiology	142	0.13	8.8 +/- 10.8 (n=142)
CT Surgery	448	0.40	7.4 +/- 13.9 (n=446)
ENT	978	0.86	2.9 +/- 3.3 (n=977)
General Surgery	2474	2.18	6.4 +/- 9.8 (n=2457)
Hand	495	0.44	3.4 +/- 3.5 (n=471)
Medicine	3211	2.84	7.7 +/- 11.5 (n=3197)
Neuro Surgery	10023	8.85	8.0 +/- 14.2 (n=9914)
OB/GYN	188	0.17	2.1 +/- 2.3 (n=188)
Ophthalmology	977	0.86	2.7 +/- 2.3 (n=973)
Oral Surgery	785	0.69	2.4 +/- 3.2 (n=770)
Orthopedics	37472	33.08	5.5 +/- 6.6 (n=37357)
Other	289	0.26	6.6 +/- 9.3 (n=285)
Pediatrics	1368	1.21	3.9 +/- 12.4 (n=1363)
Pediatric Surgery	2707	2.39	5.3 +/- 7.7 (n=2702)
Plastic Surgery	2485	2.19	3.9 +/- 5.1 (n=2465)
Psychiatry	66	0.06	5.3 +/- 4.4 (n=66)
Trauma	40601	35.85	8.1 +/- 13.2 (n=39849)
Urology	163	0.14	3.2 +/- 3.3 (n=163)
Vascular Surgery	126	0.11	6.7 +/- 9.1 (n=125)
None	83	0.07	1.0 +/- 0.0 (n=60)
Not Done/Doc	5001	4.42	1.6 +/- 6.8 (n=3674)

Table 19: Admission Service by Average LOS, 1994 – 2000

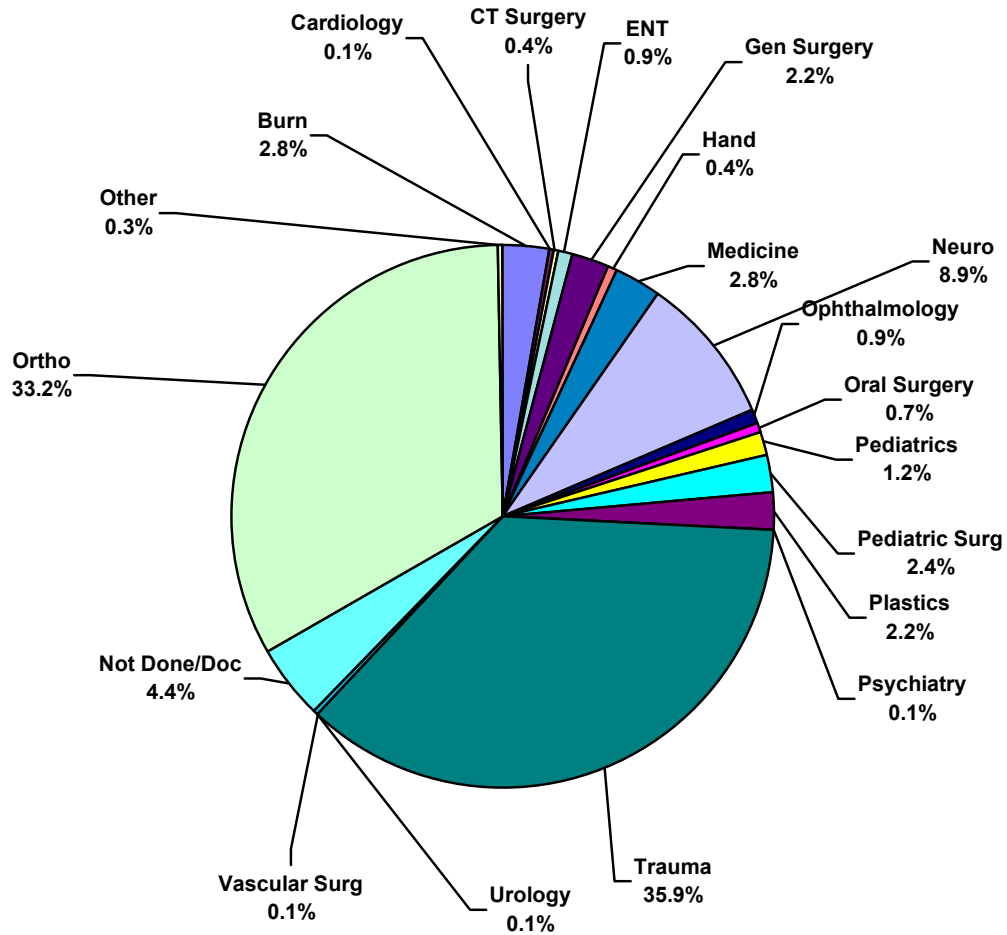


Figure 29: Admission Service, 1994 - 2000

<b>Admission Service</b>	<b>Number</b>	<b>Percent</b>	<b>Average LOS</b>
<b>Burn</b>	537	2.77	8.3 +/- 13.1 (n=536)
<b>Cardiology</b>	40	0.21	6.6 +/- 6.2 (n=40)
<b>CT Surgery</b>	33	0.17	7.4 +/- 8.8 (n=33)
<b>ENT</b>	177	0.91	2.5 +/- 2.2 (n=177)
<b>General Surgery</b>	499	2.57	5.2 +/- 6.7 (n=496)
<b>Hand</b>	46	0.24	3.1 +/- 2.6 (n=46)
<b>Medicine</b>	733	3.78	7.0 +/- 7.2 (n=732)
<b>Neuro Surgery</b>	1362	7.02	6.3 +/- 9.8 (n=1360)
<b>OB/GYN</b>	54	0.28	1.7 +/- 2.0 (n=54)
<b>Ophthalmology</b>	144	0.74	2.2 +/- -2.7 (n=144)
<b>Oral Surgery</b>	96	0.49	1.8 +/- 1.8 (n=96)
<b>Orthopedics</b>	5904	30.44	4.5 +/- 4.7 (n=5900)
<b>Other</b>	55	0.28	5.4 +/- -7.1 (n=54)
<b>Pediatrics</b>	291	1.50	2.8 +/- 4.0 (n=291)
<b>Pediatric Surgery</b>	351	1.81	4.9 +/- 7.3 (n=351)
<b>Plastic Surgery</b>	403	2.08	3.6 +/- 4.8 (n=402)
<b>Psychiatry</b>	7	0.04	2.9 +/- 2.1 (n=7)
<b>Trauma</b>	7099	36.60	7.6 +/- 11.8 (n=7045)
<b>Urology</b>	25	0.13	3.0 +/- -3.4 (n=25)
<b>Vascular Surgery</b>	13	0.07	10.1 +/- 12.3 (n=13)
<b>None</b>	75	0.39	1.0 +/- 0.0 (n=60)
<b>Not Done/Doc</b>	1453	7.49	1.3 +/- 3.8 (n=1269)

**Table 20: Admission Service by Average LOS, 1997**

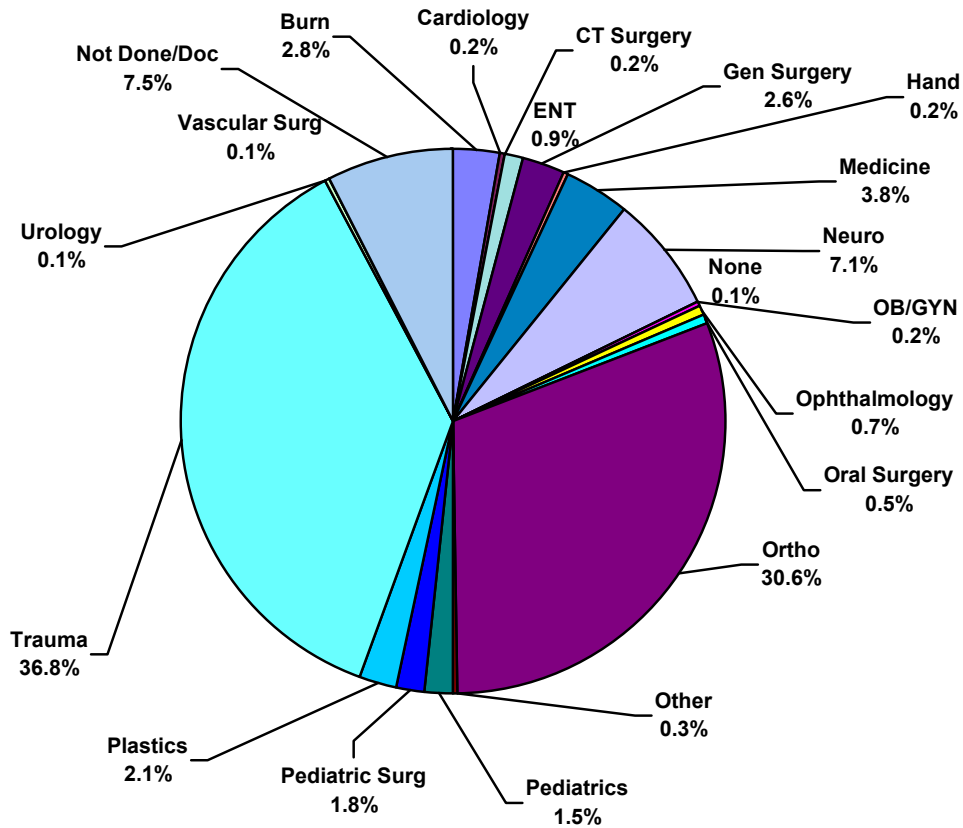


Figure 30: Admission Service, 2000

## Injury Severity and Outcome Statistics

### ***Injury Severity Score (ISS): Number of patients, survival rate, LOS, and hospital charges***

As expected, the survival rate decreases as the ISS score increases. Length of stay and hospital charges increase with ISS (for ISS < 75).

ISS (Usrais_iss)	Mean Survival	Mean Charges	LOS
1-12	98.2 +/- 13.2 (n=83217)	\$11,230 +/- 34,548 (n=77720)	5.0 +/- 7.5 (n=82980)
13-24	92.6 +/- 26.1 (n=17143)	\$29620 +/- 83957 (n=16000)	10.4 +/- 14.4 (n=16878)
25-74	63.7 +/- 48.1 (n=8302)	\$63507 +/- 650,169 (n=7535)	16.4 +/- 22.5 (n=7628)
75	21.4 +/- 41.1 (n=387)	\$24889 +/- 49963 (n=328)	10.4 +/- 18.8 (n=228)

**Table 21: Injury Severity by Survival Rate, Average LOS, and Average Hospital Charges, 1994 - 2000**

ISS (Usrais_iss)	Mean Survival	Mean Charges	LOS
1-12	98.5 +/- 12.0 (n=14608)	\$11,978 +/- 70,913 (n=12278)	4.1 +/- 5.7 (n=14565)
13-24	93.6 +/- 24.5 (n=2858)	\$31,012 +/- 46,464 (n=2,380)	9.3 +/- 11.7 (n=2820)
25-74	66.8 +/- 47.1 (n=1439)	\$60,591 +/- 74,450 (n=1116)	15.3 +/- 17.9 (n=1350)
75	22.6 +/- 42.2 (n=53)	\$39,946 +/- 75,234 (n=43)	9.9 +/- 13.5 (n=34)

**Table 22: Injury Severity by Survival Rate, Average LOS, and Average Hospital Charges, 2000**

## Hospital Disposition

The majority of trauma patients were discharged from the hospital to home (~67%). The next tier of patients were discharged to a nursing home (~8%) or a rehabilitation facility (~9%). The field value "Pending" comprised less than 0.05% of the dataset, so this value was excluded from the graph below.

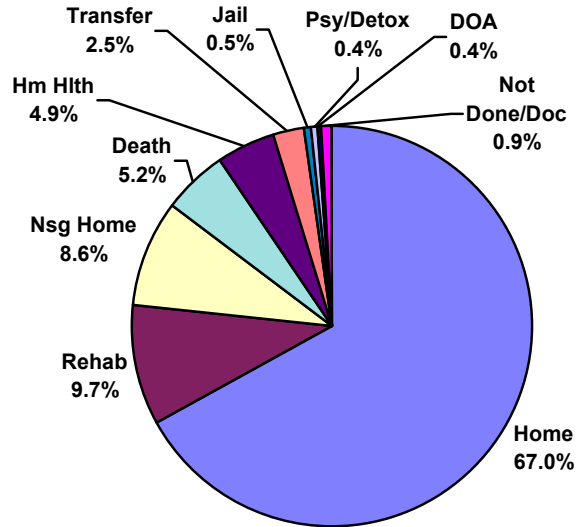


Figure 31: Hospital Disposition Distribution, 1994 - 2000

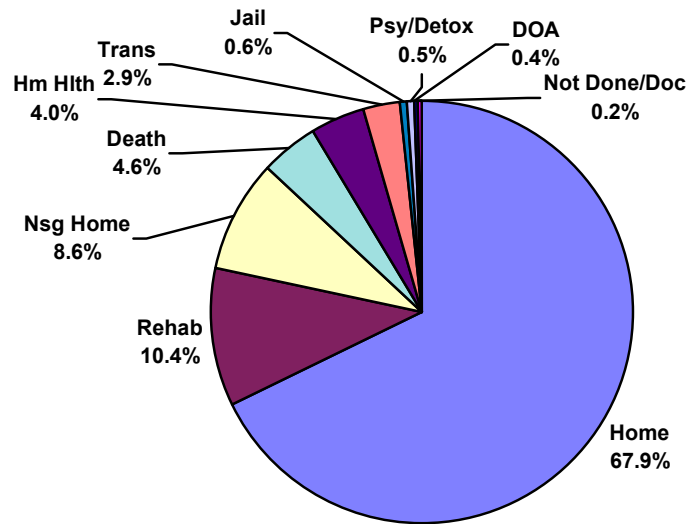


Figure 32: Hospital Disposition Distribution, 2000

## Financial Statistics: Payor Mix

The distribution of payors has remained relatively constant over the past three years. The field values “Pending”, “Private Charity”, and “None” comprised less than 0.1% of the dataset each, so these values were excluded from the graph below.

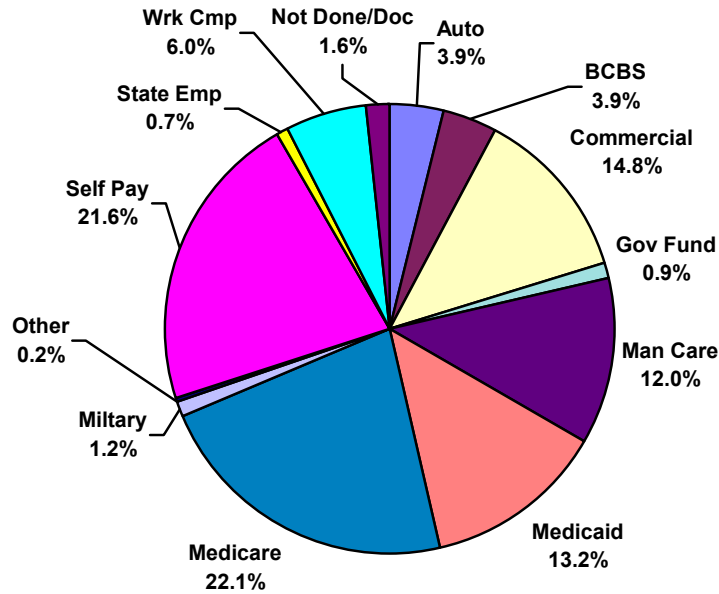


Figure 33: Insurance Distribution, 1994 - 2000

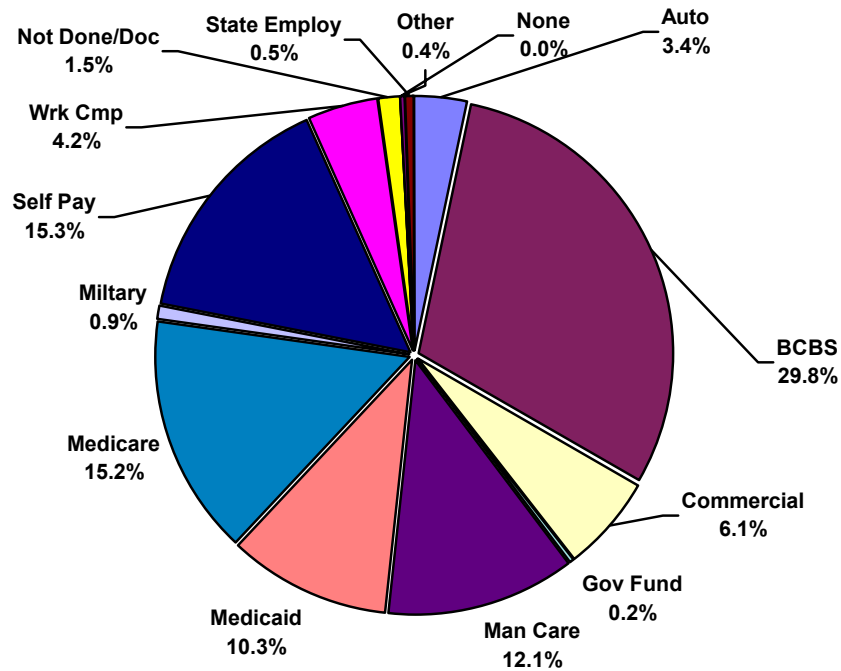


Figure 34: Insurance Distribution, 2000

## Hospital Transfers (Patients Transferred to the Trauma Center)

Overall, the percentage of patients transferred to the Trauma Centers and other Trauma Registry hospitals was 30.3%; The percentage of patients not transferred was 64.0%, and the documentation of transfer status was not done in 5.6% of the patients for the period of 1994 - 2000. The breakdown by year is as follows:

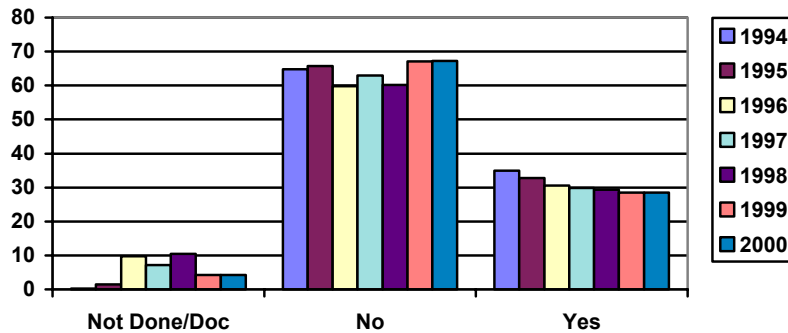


Figure 35: Hospital Transfer Rate by Year

### Mechanism of Injury for Transferred Patients

Of the patients who were transferred to the Trauma Registry participating hospitals, 79.2% had blunt injuries, 7.7% had burn injuries, and 12.8% had penetrating injuries. The breakdown of the injury types by year of admission is presented below. The categories of Not Done/Doc, Pending, and Other each contained less than 1% of the population, and thus were excluded from the graph below.

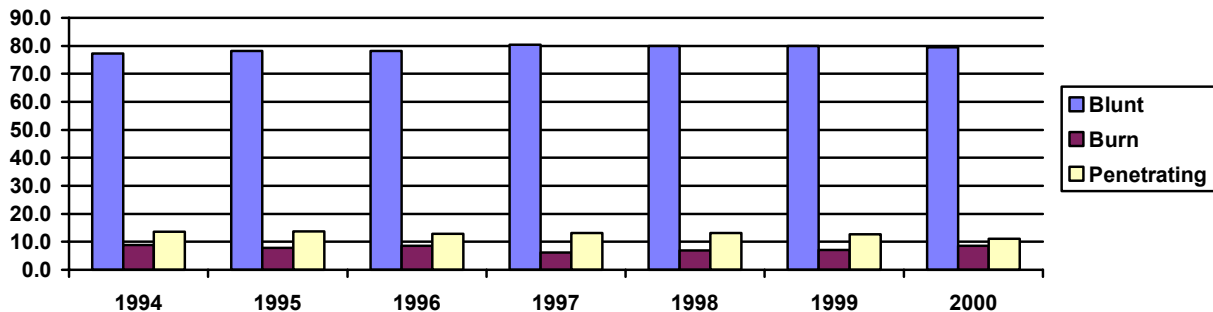


Figure 36: Distribution of Mechanism of Injury in Patients Who Were Transferred to the Trauma Centers

### Mechanism of Injury by Year for Transferred Patients Who Died

Of the 2266 transferred patients who died, 10 had no mechanism of injury recorded and 6 had a mechanism of injury of “Other”. Of the remaining 2250 patients, 17.1% had penetrating injuries, 74.2% had blunt injuries, and 8.7% had burn injuries. The distribution of these injuries by year is shown in the graph below.

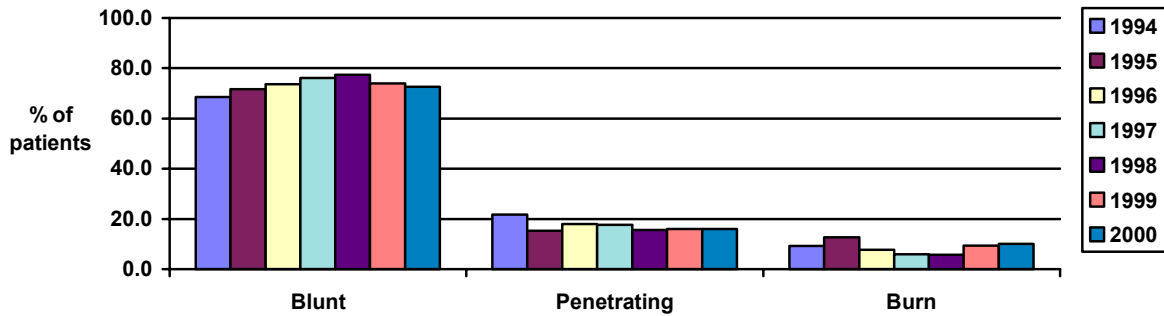


Figure 37: Distribution of Mechanism of Injury in Transferred Patients Who Died